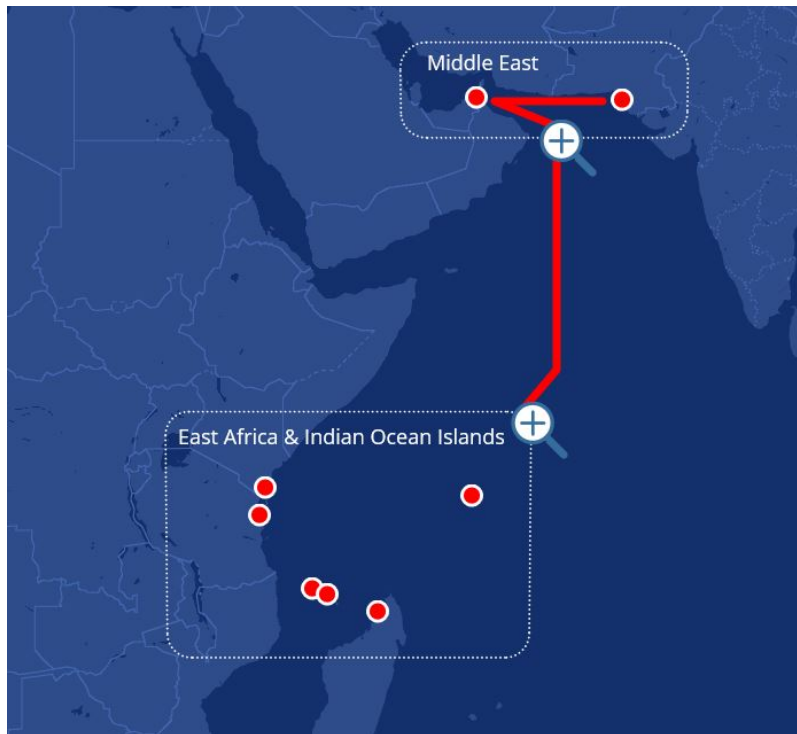


MEX Middle East Express - Route Information



SERVICE DETAILS

The Middle East Express Service, UAFL's flag ship service, revamped and relaunched in 2019. MEX is testament to UAFL's flexibility and focus on meeting customer's demand in a rapidly changing environment. Cargo from India, Asia, Europe and other Middle East/Gulf ports is transshipped over Jebel Ali. Features of the service include:

- 12 Day Frequency
- Best transit time from Jebel Ali into Seychelles
- The most reliable service into Zanzibar

PORTS SERVED

- JEBEL ALI
- KARACHI
- MUTSAMUDU
- NACALA
- NHAVA SHEVA
- PORT VICTORIA

Transit Times - Southbound

FROM/TO	KARACHI	JEBEL ALI	PORT VICTORIA	NACALA	MUTSAMUDU*
NHAVA SHEVA	2	7	16	21	25
KARACHI		3	12	17	21
JEBEL ALI			8	13	17
PORT VICTORIA				4	8

Transit Times - Northbound

FROM/TO	MUTSAMUDU	NHAVA SHEVA	JEBEL ALI
PORT VICTORIA	10	23	34
NACALA	1	14	25
MUTSAMUDU		10	21
NHAVA SHEVA			11